



GCI

GCI - DR. SCHINDLER

GEO CONSULT INTERNATIONAL GMBH & CO. KG

Country:

Germany

Project name:

QGIS Trainings for FOSS Academy

Name of Client:	Private, commercial and administrative users of OS-software
Project location within country:	Leipzig and Bonn
Name of legal entity:	GCI – Dr. Schindler Geo Consult International GmbH & Co. KG
Project value carried out by legal entity:	12,000 €
No of staff provided:	2 STE (0,5 p/m)
Start date (month/ year):	10/2015
Completion date (month/year):	11/2018
Origin of funding:	
Name of Associated firms:	Foss Academy, Where Group GmbH & Co. KG

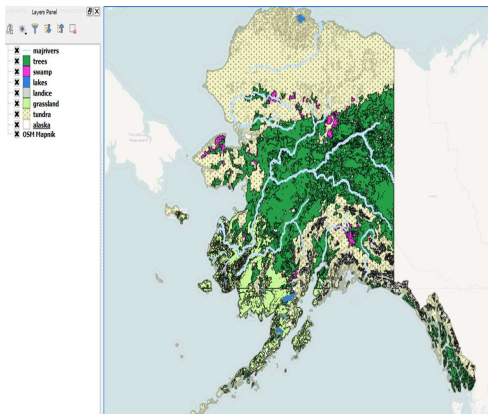
Training: Atlas creation with Print composer

Training: Data Modeling

FOSS Academy

GCI

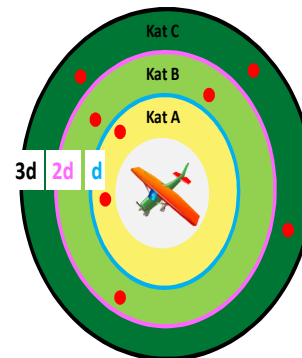
Praxis Atlas-Erstellung mit dem Print Composer



FOSS Academy

GCI

Aufgabe 3 Ein Modell im Modeler erstellen



● Ortschaften
 d = Basisdistanz / Basis-Buffer
 Kat A: Ortschaft im Bereich $\leq d$
 Kat B: Ortschaft im Bereich $> d$ und $< 2d$
 Kat C: Ortschaft im Bereich $> 2d$ und $< 3d$

Schulung QGIS für Fortgeschrittene inklusive QGIS Server

7

Training on behalf of the FOSS Academy are executed aiming at beginners, experienced users and professional QGIS user

- Installation of QGIS, QGIS as interoperable viewer for common data formats (vector- and raster, PostGIS and Spatialite as geo data sources)
- QGIS project management, attribute- and geometry maintenance
- QGIS-plugins from practice: format conversions and transformations, georeferencing raster data, Mapcomposer
- Printing options, templates, Geoprocessing and Modelbuilder, Linking geodata with websites, layer actions
- QGIS as WMS and WFS
- Introduction to Python, Using the QGIS Python console, overview on QGIS Python bibliothèques
- Introduction to QT4 to create own dialogues, structure of QGIS Python-plugins
- Creating own plugins, useful plugins