



# GCI

GCI - DR. SCHINDLER

GEO CONSULT INTERNATIONAL GMBH & CO. KG

Country:

# Mongolia

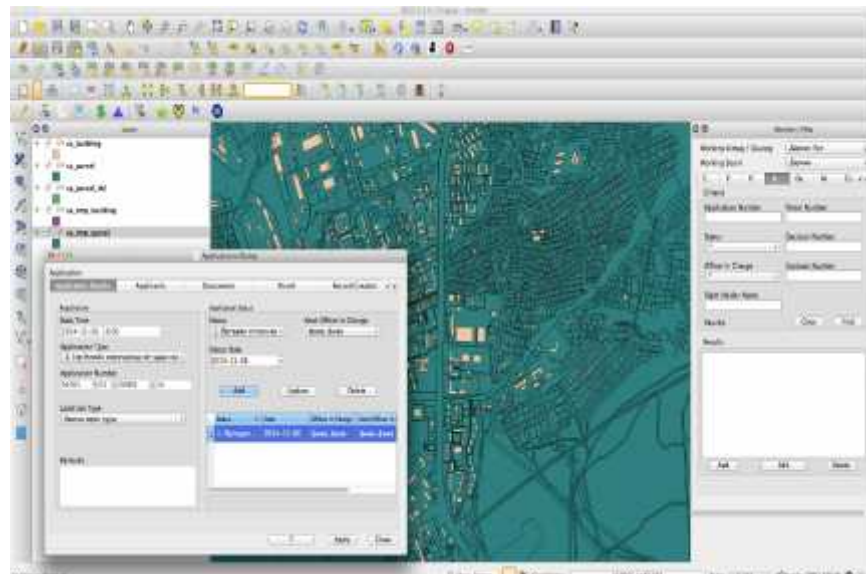
Project name:

## Development of a geodatabase and software for the National Cadastre Agency (ALACGaC)

Name of Client:	Administration of Land Affairs, Construction, Geodesy and Cartography Of Mongolia (ALACGaC)
Project location within country:	Ulaan Baatar
Name of legal entity:	GCI – Dr. Schindler Geo Consult International GmbH & Co. KG
Overall project value:	120,000 €
Proportion carried out by legal entity:	30 %
No of staff provided:	1 STE (3 p/m)
Start date (month/ year):	04/2014
Completion date (month/year):	12/2014
Origin of funding:	ALACGaC
Name of Associated firms:	

Winter in Mongolia

Land Manager II



Detailed description of the project:

The project aimed to establish nationwide a Landmanagement software "Land Manager II" for the national cadastre agency.

Services provided:

- Dissemination of data through internet and using them in land cadastre activities
- Design and implementation of a spatial database
- Setting up a high performance database server on Linux
- Data preparation, conversion and migration
- Implementation of a WebGIS to disseminate land information and other spatial information, providing routing functionality, search tools, etc.
- Setting up database replication between regional Land Offices and ALACGaC head quarters in Ulaan Baatar